

# Using M\*Modal's Speech-to-Text With DrChrono on the iPhone

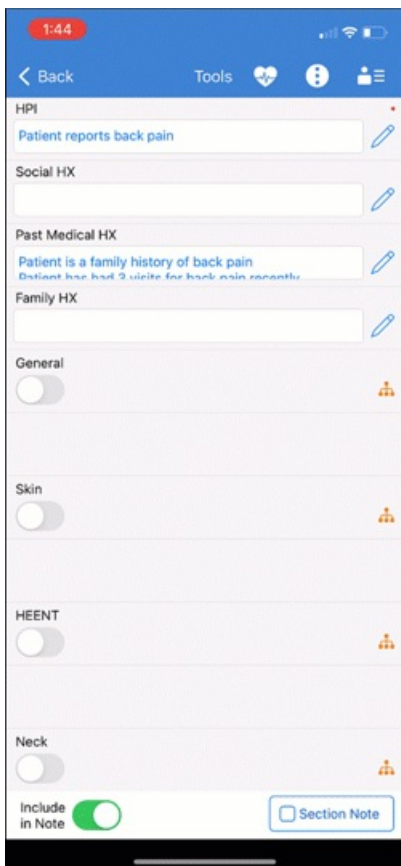
07/24/2024 10:06 pm EDT

DrChrono is integrated with the most accurate HIPAA-compliant medical Speech-to-Text product on the market from M\*Modal. M\*Modal believes that having a Speech-to-Text solution in a doctor's office is less about speech recognition and more about speech understanding. We at DrChrono believe the same, which is why we have fully integrated M\*Modal into our mobile platform. For information on speech-to-text, see our video [here](#).

Almost everywhere there is a keyboard within the DrChrono iPad EHR app, you are given the option to use M\*Modal's Speech-to-Text feature. All you have to do is tap on the field you would like to enter text in, select the microphone icon, and start dictating your note. Once you have finished simply select **Tap to end** and it will then show you your new accurately dictated note.

Note: The iPad's microphone works quite well, but for best results, it is recommended you use a headset and mic while dictating.

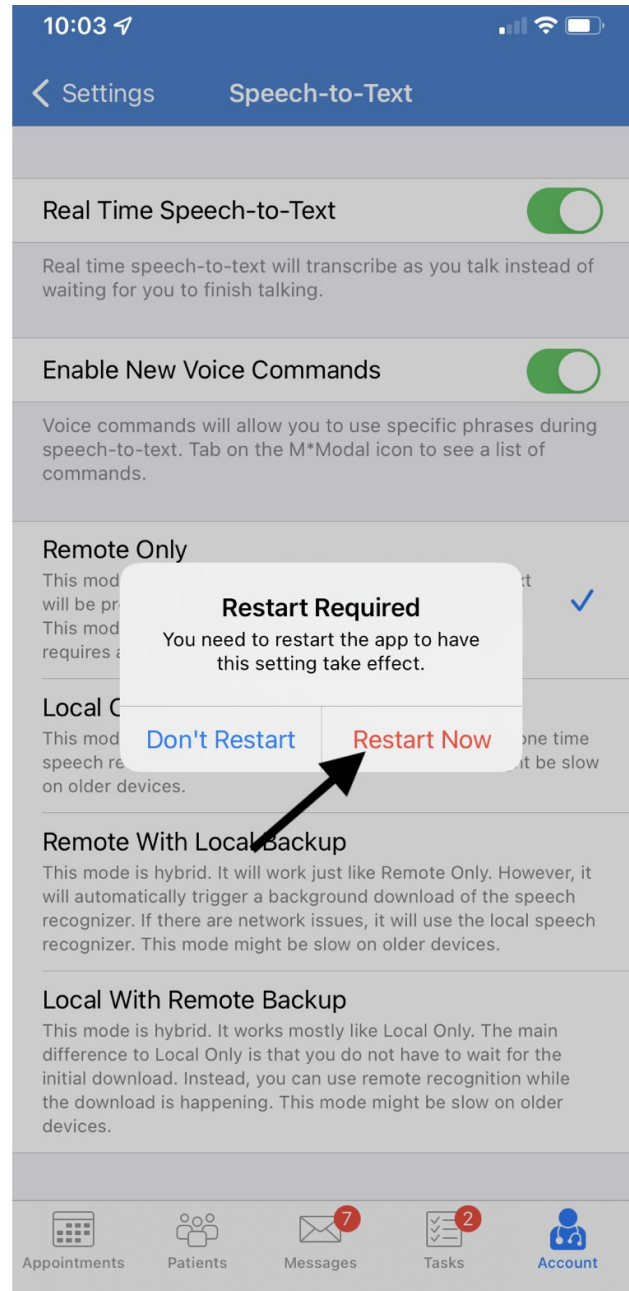
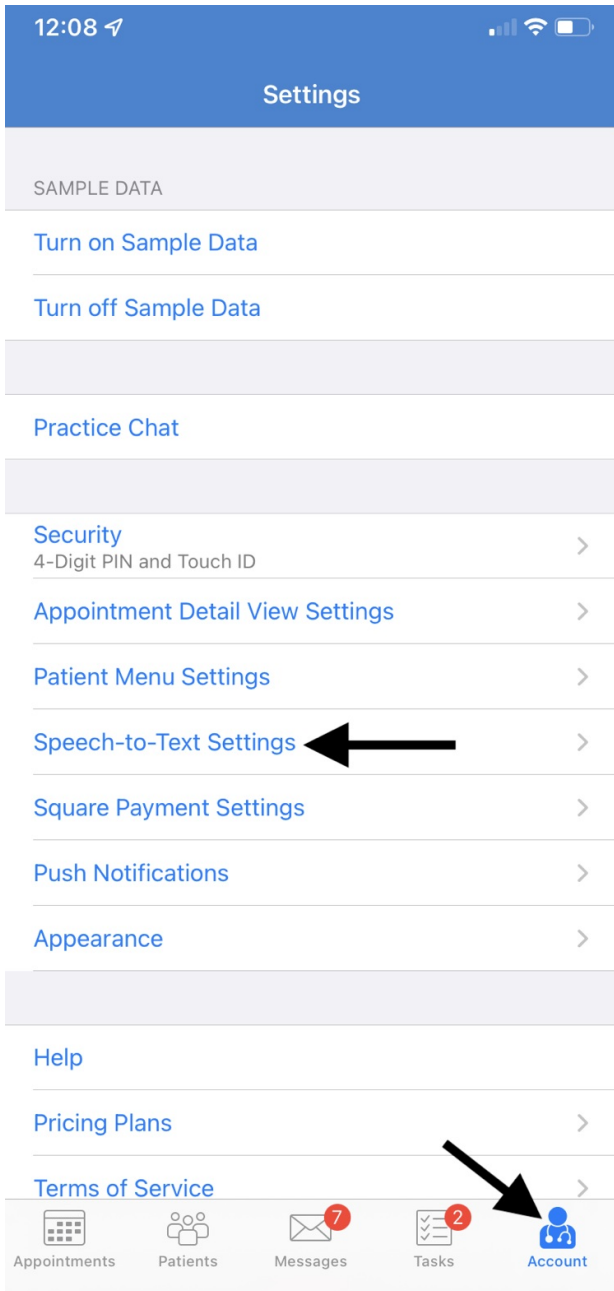
M\*Modal's Speech-to-text feature is only available on our Hippocrates and higher-paid [plans](#).



You can also set up your speech-to-text program to respond to **voice commands**, allowing you to add punctuation, new lines, and paragraphs, or go to the next field to continue dictation. To set this up go to **Account**. Select **Speech-to-Text Settings**. Activate the switch (



) and select **Restart Now**. Your app will restart.



Tap the pencil icon (

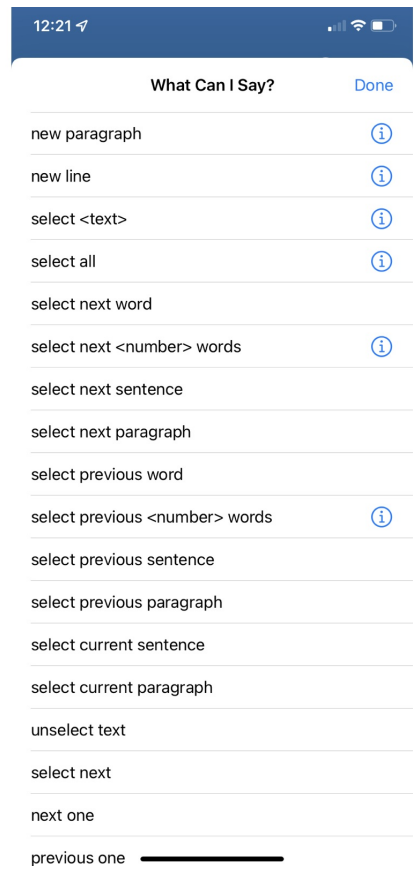
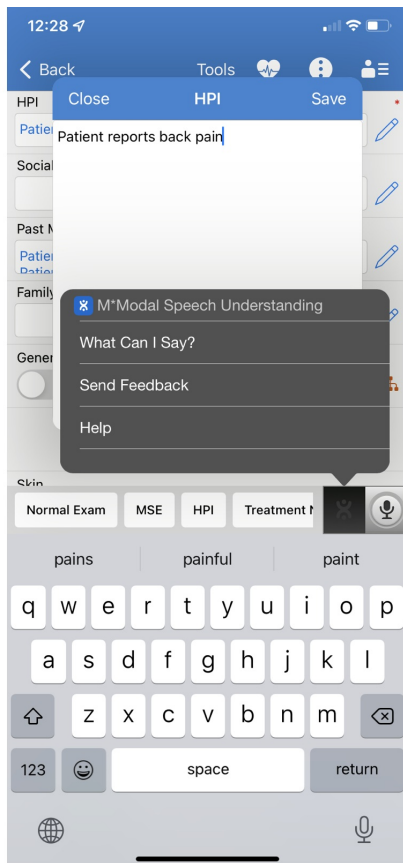
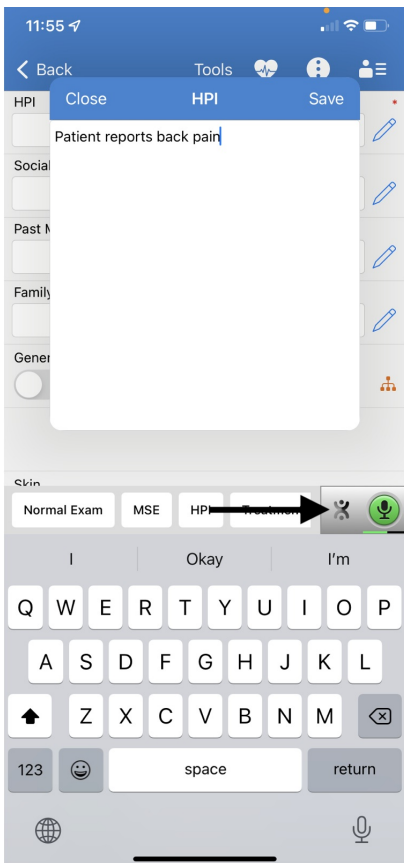


) to open the text field for dictation. To view the voice commands select the (



) icon next to the microphone and tap **What can I Say?**

While dictating, you can use the commands listed to help you navigate the dictation.



Tap the microphone to begin and end.

